

*The Flores® retaining wall system adds a distinctive element to any landscape setting*

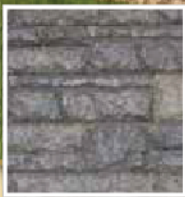
Bring distinctive old-world character and charm to your landscape project! Beautifully textured, this single-piece product has the look of hand-assembled stone. The lightweight, easy-to-handle size makes this the perfect solution for small retaining walls and garden planters.



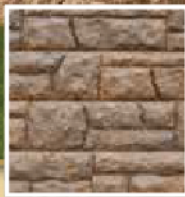
Flores® retaining wall



Flores Pecan



Flores Pewter

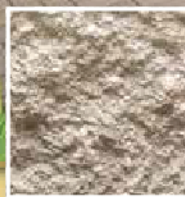


Flores Fieldstone

*Anchor Windsor® Stone, with its traditional beveled face and rear lip, is perfect for all your small landscape projects*



Windsor Stone retaining wall



Grey



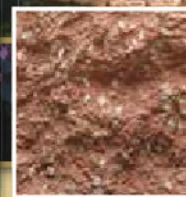
Tan



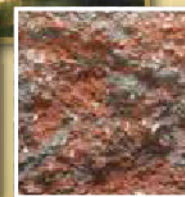
Chocolate



Fieldstone



Red



Rosestone